



Service Information Bulletin

NUMBER: 2 2-10 **S.M. REF.:** Listed in Table **ENGINE:** EPA07 Aftertreatment **DATE:** February 2010

SUBJECT: ASH ACCUMULATOR RESET

ADDITIONS, REVISIONS, OR UPDATES

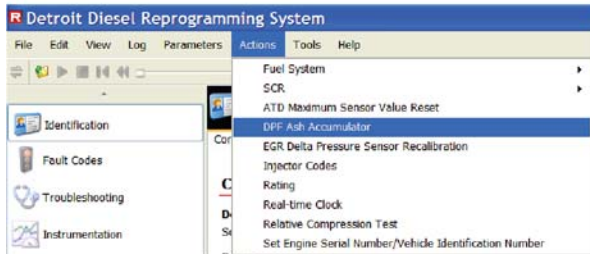
Publication Number	Platform	Section Title	Change	Page Number(s)
DDC-SVC-MAN-0036	All EPA07 Engines	3.2 Ash Accumulator Reset	Procedure has been updated	

NOTE: Page numbers are based on the most recent version of the individual publication and may be adjusted throughout the annual print cycle.

EPA07 RESETTING DPF ASH ACCUMULATORS USING DDDL 7.05 OR HIGHER

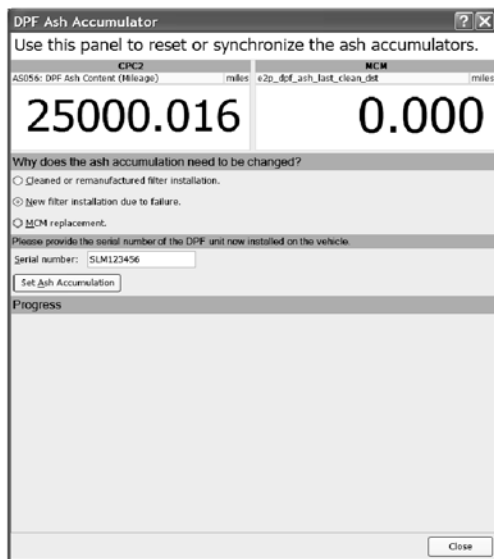
To reset the Ash Accumulator using DDDL 7.05 or higher perform the following:

1. Select DPF Ash Accumulator from the Actions menu.



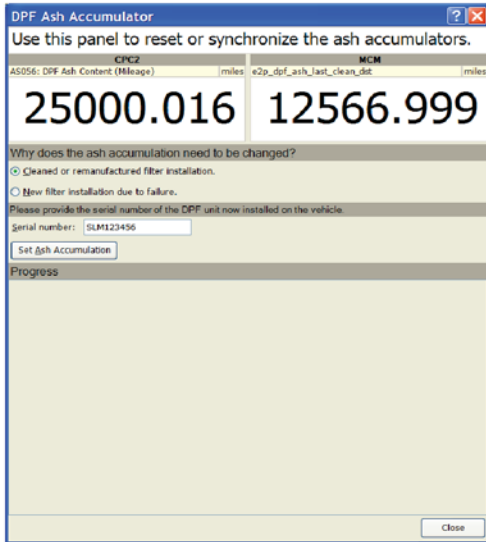
d140256

2. Select the radio button for the reason the ash accumulators are being reset.



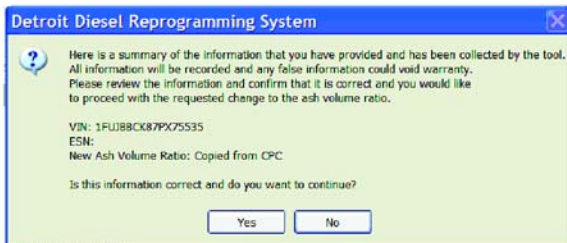
d140257

3. Type in the DPF serial number in the space provided. Click on “Set Ash Accumulation”.



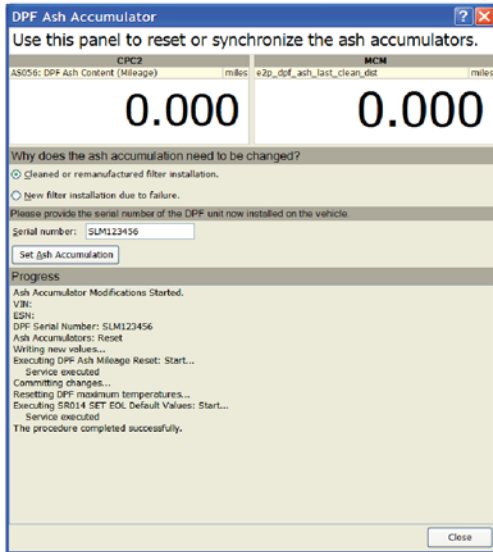
d140258

4. A summary screen will appear showing what the tool has collected and the Serial number that you just entered. If correct, select “Yes.” If incorrect, click No and reenter the Serial number.



d140259

5. When the process starts a progress box will appear. Once completed the progress box will display “The procedure completed successfully.” Select Close.

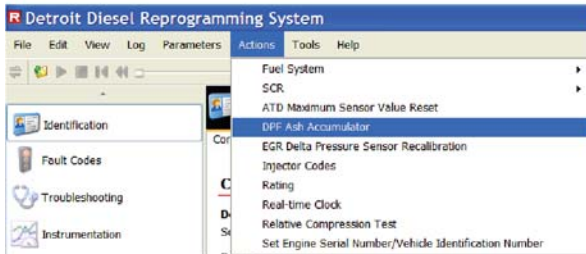


d140260

EPA07 RESETTING DPF ASH ACCUMULATORS USING DDRS 7.05 OR HIGHER

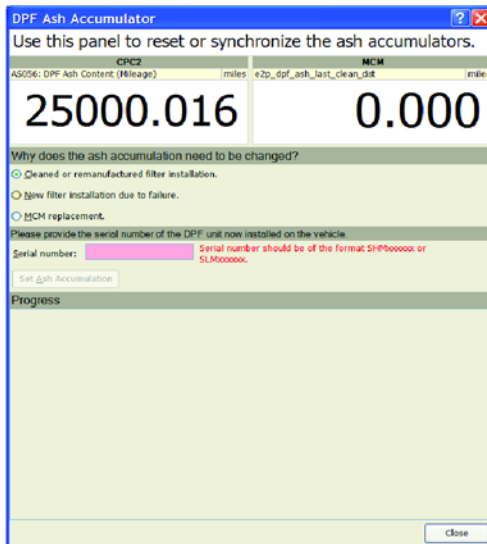
To reset the Ash Accumulator using DDRS 7.05 or higher perform the following:

1. Select DPF Ash Accumulator from the Actions menu.



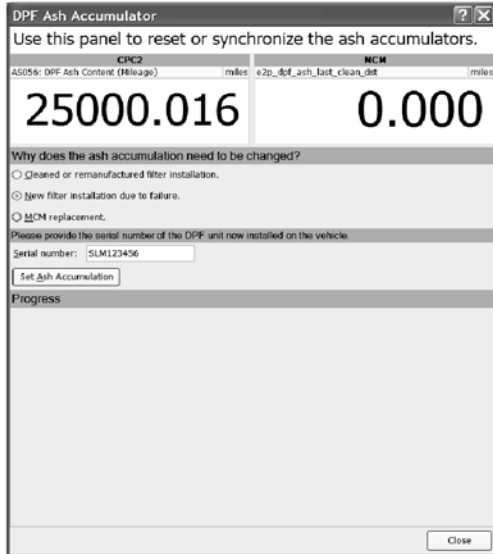
d140256

2. Select the radio button for the reason the ash accumulators are being reset.
 - [a] If you select “Cleared or remanufactured filter installation” or “New filter installation due to failure,” go to step 3.
 - [b] If the “MCM replacement” is selected, go to step 4.



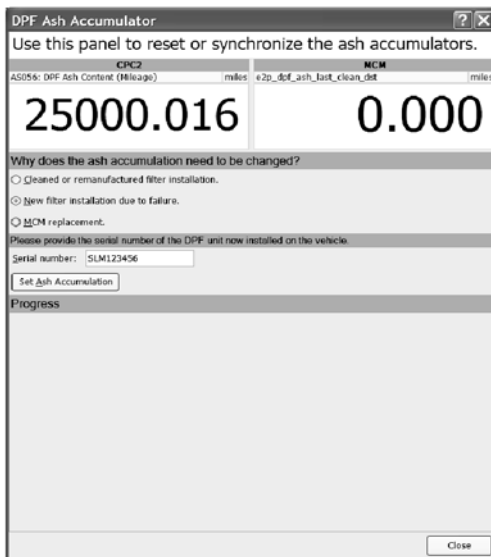
d140256

3. Type in the DPF serial number in the space provided. Click on “Set Ash Accumulation”. Go to step 5.



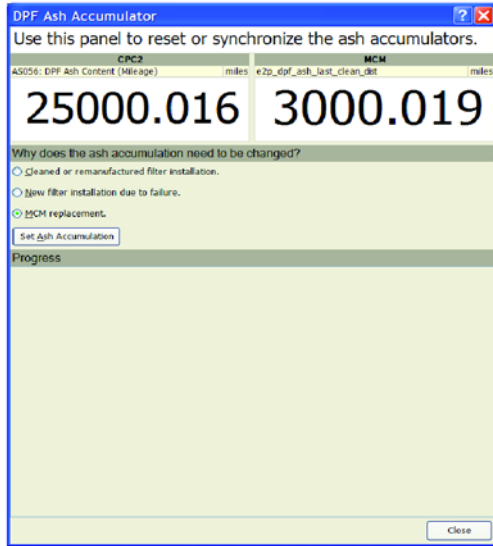
d140257

4. “MCM replacement” option: The mileage will be copied from the CPC and written to the MCM.
- If MCM is reading 0 miles, then the technician can select “Synchronize from the CPC” or “provided by the technician.”

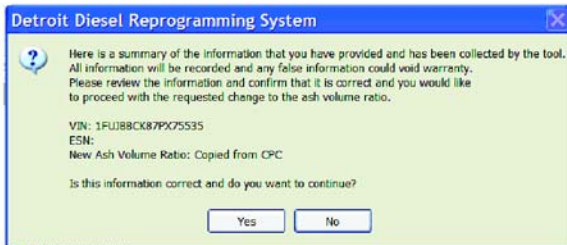


d140257

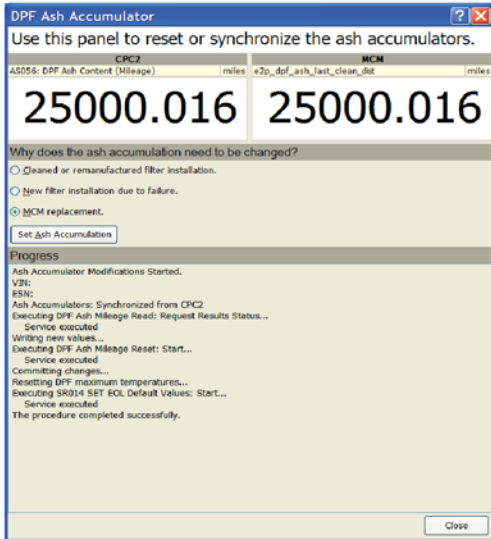
- If the MCM has mileage, then the only option is to Synchronize from the CPC.



- Select “Set Ash Accumulation”.
5. A summary screen will appear showing information the tool has collected. If correct, select “Yes.” If incorrect, click No and reenter the Serial number.



6. When the process starts, a progress box will appear. Once completed, the progress box will display “The procedure completed successfully.” Select Close.



d140262

ADDITIONAL SERVICE INFORMATION

Additional service information is available in *Power Service Literature*.

DETROIT DIESEL
CORPORATION



13400 Outer Drive, West / Detroit, Michigan 48239-4001
Telephone: 313-592-5000
www.detroitdiesel.com